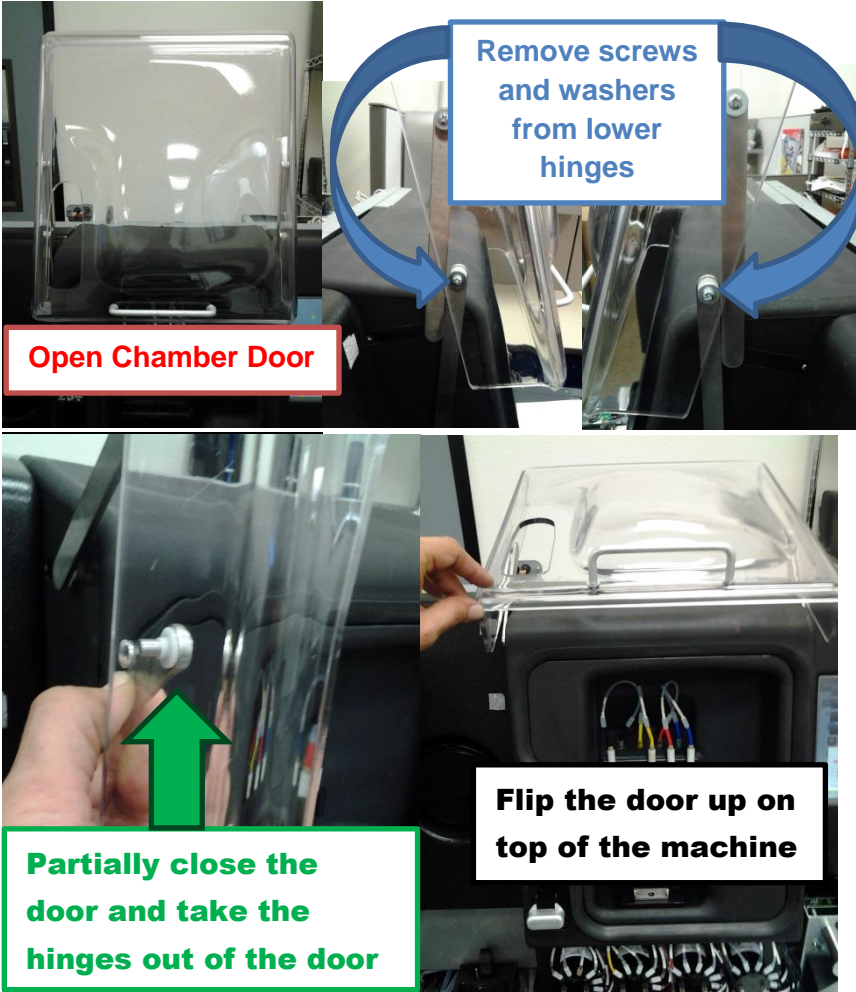






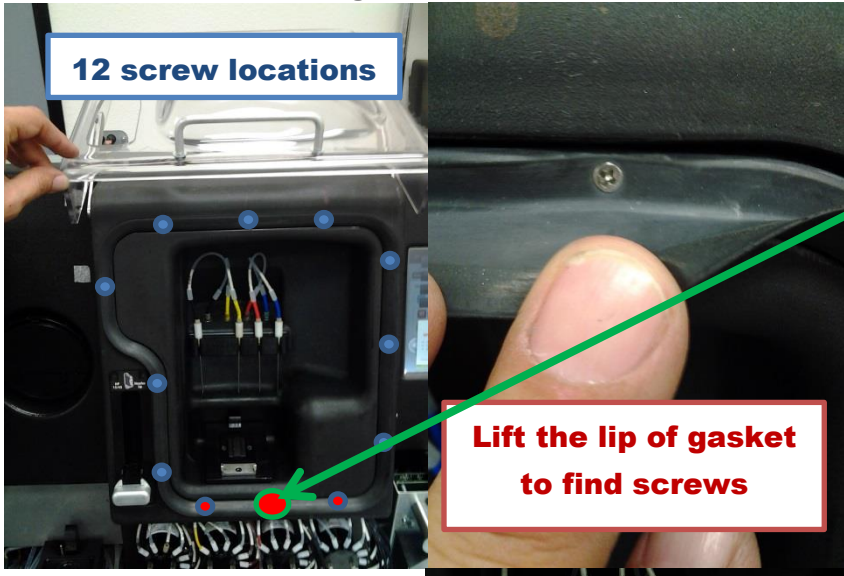
Replacing the Chamber Gasket

Tools Required: Phillips screw driver, T-15 torx driver

STEP	DISCUSSION	ACTION – DO THIS
1	<p style="text-align: center;">Move the chamber door out of the way</p> 	<ul style="list-style-type: none">  Open the Chamber door  Take the screws and washers off of the bottom hinges only (they should be Phillips heads, but may be T15 Torx)  Partially close the door and take the hinges out of the door  Flip the door up on top of the machine.

Remove old gasket and clean area

12 screw locations



Lift the lip of gasket to find screws

Clean the gasket area with a cleaning wipe



Take out the bottom 3 screws in the gasket

An extra securing screw point has been added to the fill chamber gasket located at the bottom center

Loosen the other 9 screws about 2 turns

Find the screws by lifting the lip of the gasket.

Remove and discard the old gasket

Clean the area where the gasket touches the chamber with a cleaning wipe to remove any ink that may have accumulated.

Cleaning the inside of the door is also recommended

Install New Gasket and secure screws properly



Screw set properly 😊



Screw in too far

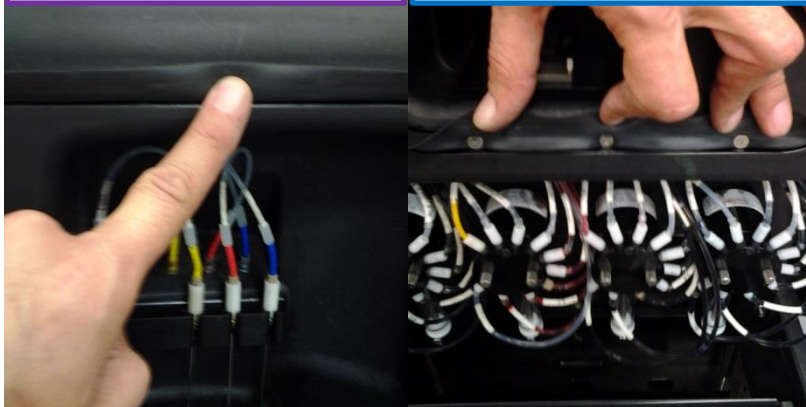


Screw not in far enough

NOTE: Screws must go in straight, if they go in on an angle or crooked, it will prevent the door from sealing properly.

You shouldn't feel the screw when you rub finger over screw

The bottom 3 screws get the flat metal washers



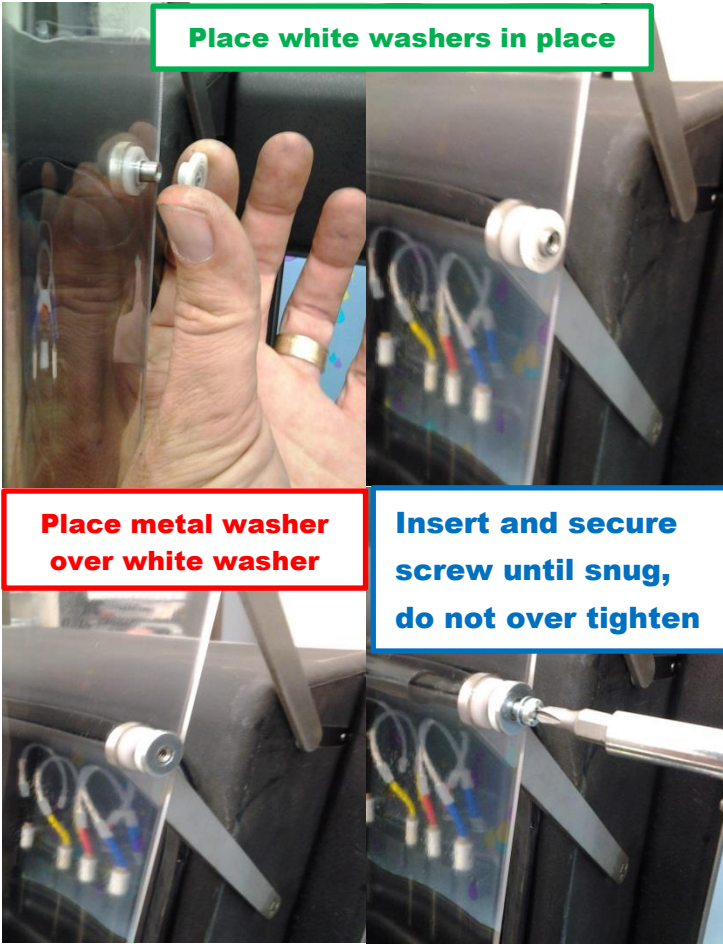
🔧 **Put the new gasket in place. Press the gasket over the 9 screws loosened previously. Tighten the 9 screws.**

🔧 **Be careful to turn the screws down far enough so they cannot be felt when you run your finger over the outside. If you can feel the screw from outside the gasket, screw it down a little further. If you go too far the rubber from the gasket can slip out/squeeze out around the screw.**

🔧 **Install the Bottom 3 screws with washers to help secure the gasket at the bottom of the fill chamber. 3 extra screws are included with the kit in case the originals are lost or missing. 12 screws are all the gasket needs, no more, no less.**

Reinstall the lower hinges onto the chamber door

Place white washers in place



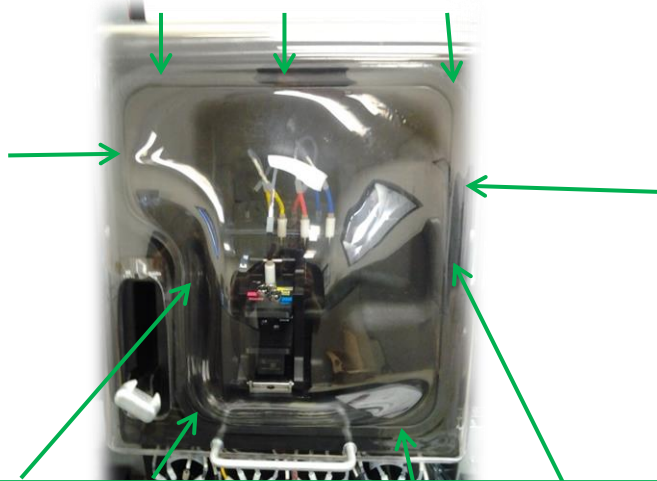
Place metal washer over white washer

Insert and secure screw until snug, do not over tighten

- 🔧 **Reinstall lower hinges into door**
- 🔧 **Place white washers in place**
- 🔧 **Place metal washer over white washer**
- 🔧 **Insert and secure screw until snug, do not over tighten**

4

Test a cartridge



Check to see if the gasket is touching the door

The best way to test how well you replaced the gasket is to refill a cartridge and see if the chamber door seals properly.

5

A video of this procedure is available on the Ink Center.

- 🔧 **Select the “Help” tab,**
- 🔧 **Select “How To ...”**
- 🔧 **Select the “Changing the Fill Chamber Door Gasket”**

7

